

Information

Power Parts

62011042044

04. 2013

3.211.456



*KTM Sportmotorcycle AG
Stallhofnerstraße 3
A-5230 Mattighofen
www.ktm.com*

KTM **POWERPARTS**

Danke, dass Sie sich für KTM Power Parts entschlossen haben.

Alle unsere Produkte wurden nach den höchsten Standards entwickelt und gefertigt, unter Verwendung der besten verfügbaren Materialien.

KTM Power Parts sind rennerprobt und gewährleisten ultimative Performance.

KTM KANN NICHT VERANTWORTLICH GEMACHT WERDEN FÜR FALSCHES MONTAGE ODER VERWENDUNG DIESES PRODUKTS. Bitte befolgen Sie die Montageanleitung. Fachmännische Beratung und korrekte Installation der KTM PowerParts durch einen autorisierten KTM Händler sind unerlässlich, um das Optimum an Sicherheit und Funktionalität zu gewährleisten.
Danke.

Thank you for choosing KTM Power Parts!

All of our products are designed and built to the highest standards using the finest materials available.

KTM Power Parts are race proven to offer the ultimate in performance.

KTM WILL NOT BE HELD LIABLE FOR IMPROPER INSTALLATION OR USE OF THIS PRODUCT. Please follow all instructions provided. Professional advice and proper installation of the KTM PowerParts by an authorized KTM dealer are essential to provide maximum safety and functions.
Thank you.

Grazie per aver deciso di acquistare un prodotto KTM Power Parts.

Tutti i nostri prodotti sono stati sviluppati e realizzati secondo i massimi standard e con l'impiego dei migliori materiali disponibili.

Le KTM Power Parts sono collaudate nelle competizioni ed assicurano altissime prestazioni.

KTM NON PUÒ ESSERE RESA RESPONSABILE PER UN MONTAGGIO O USO IMPROPRIO DI QUESTO PRODOTTO. Per favore osservate le istruzioni nel manuale d'uso. Al fine di garantire la massima sicurezza e il corretto funzionamento, è indispensabile farsi consigliare da persone esperte e competenti e far eseguire l'installazione delle KTM PowerPart presso i concessionari KTM autorizzati.
Grazie.

Nous vous remercions d'avoir choisi KTM Power Parts.

Tous nos produits ont été développés et réalisés selon les plus hauts standards et en utilisant les meilleurs matériaux disponibles.

Les Power Parts de KTM ont fait leurs preuves en compétition et garantissent les meilleures performances.

LA RESPONSABILITÉ DE KTM NE SAURAIT ÊTRE ENGAGÉE EN CAS D'ERREUR DANS LE MONTAGE OU L'UTILISATION DE CE PRODUIT.

Il convient de respecter les instructions de montage.

Le conseil spécialisé et l'installation dans les règles de l'art des PowerParts KTM par un concessionnaire KTM agréé sont indispensables pour assurer un maximum de sécurité et de fonctionnalité.

Merci.

Gracias por haberse decidido por el Power Parts KTM.

Todos nuestros productos han sido desarrollados y producidos según los estándares más altos utilizando los mejores materiales disponibles.

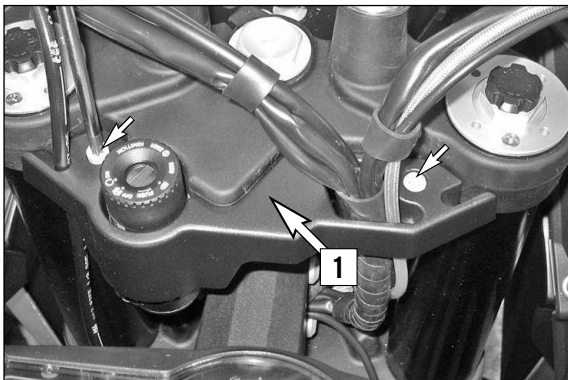
Las KTM Power Parts están probadas en competencia y garantizan un óptimo rendimiento.

NO SE PUEDE HACER RESPONSABLE A LA KTM POR UN MONTAJE O UN USO INCORRECTO DE ESTE PRODUCTO.

Le rogamos seguir las instrucciones para el montaje.

A fin de garantizar la máxima seguridad y un funcionamiento correcto es imprescindible acudir a un concesionario autorizado de KTM para obtener el mejor asesoramiento técnico e instalar correctamente las KTM PowerParts.

Gracias.

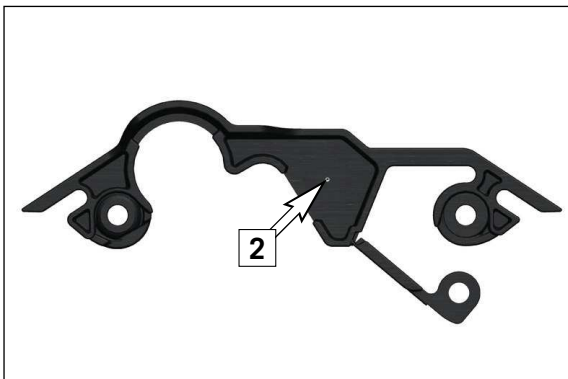
**Lieferumfang:**

1x Steckdose
 1x Kabel Steckdose SMT
 1x Sechskantmutter M18x1 SW22

60111042000
 62011042060
 62011042050

Vorarbeiten

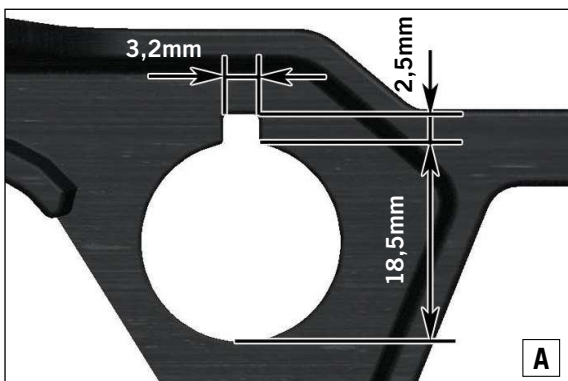
- Verkleidung (1) demontieren.

**990 SMT**

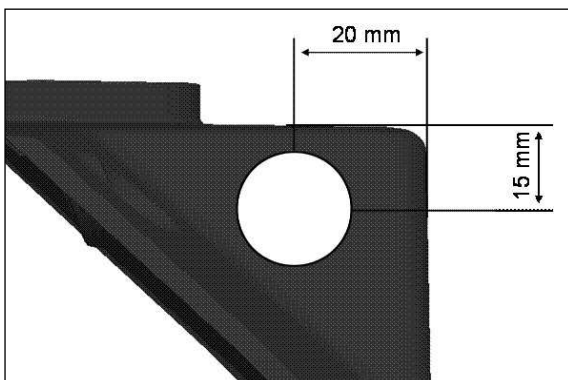
- Bohrung $\varnothing 18,5\text{mm}$ für die Steckdose bohren.

HINWEIS

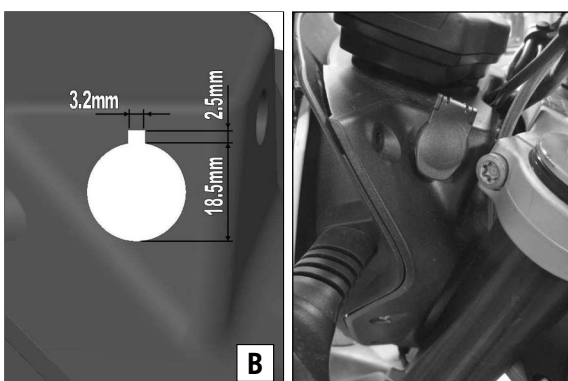
Für die richtige Position befindet sich auf der Rückseite der Verkleidung eine Markierung (2)

**990 SMT**

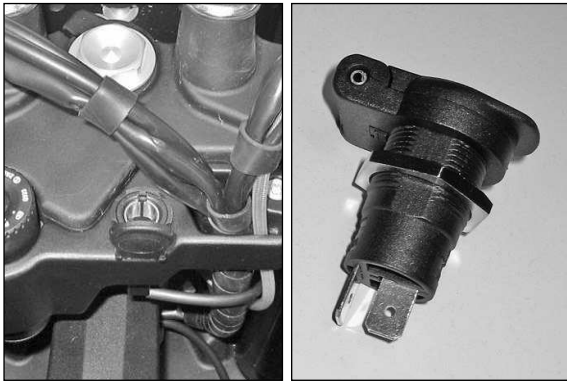
- Zusätzlich zur Bohrung eine kleine Nut ausschneiden (Bild A).

**690 Duke**

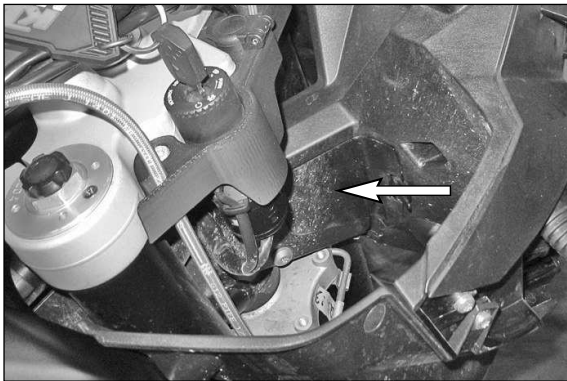
- Bohrung $\varnothing 18,5\text{mm}$ für die Steckdose bohren.

**690 Duke**

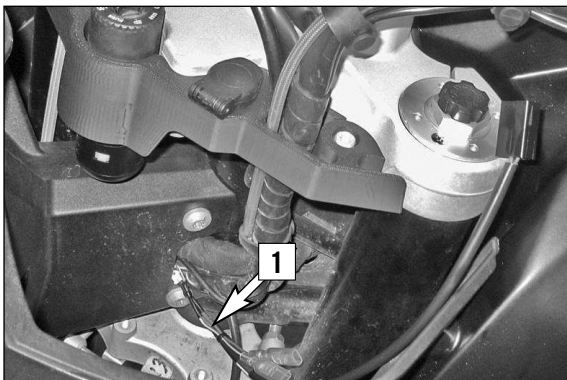
- Zusätzlich zur Bohrung eine kleine Nut ausschneiden (Bild B).



- Steckdose montieren.
- Verkleidung (1) montieren.

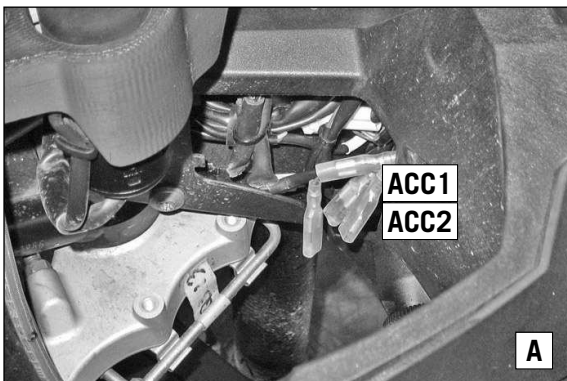


- Klappe auf der rechten Seite des Motorrads öffnen.



- Kabel (1) verlegen.

HINWEIS:
Kabel von links nach rechts mit dem Kabelstrang verlegen.



- mit ACC1 oder ACC2 verbinden (Bild A).

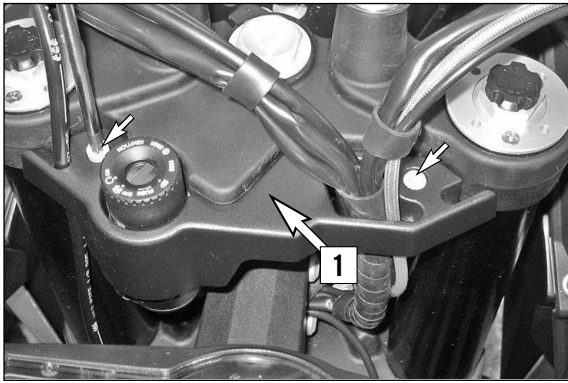
HINWEIS:
ACC1 - Strom über Dauerplus.
ACC2 - Strom über Zündung.

- mit Steckdose verbinden.



- Klappe schließen

HINWEIS:
Kabel ev. mit dem Spiralschlauch mitbinden.



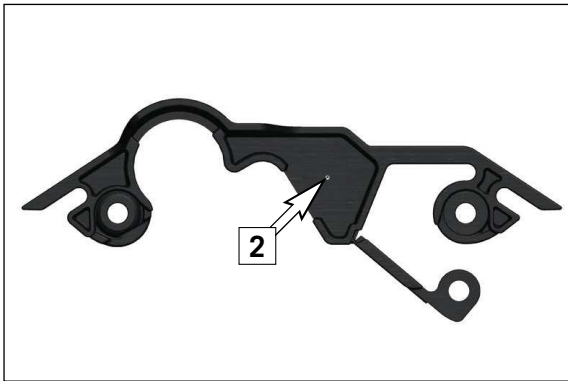
Scope of delivery:

- 1x power socket
- 1x cable, SMT power socket
- 1x hexagon nut M18x1 SW22

60111042000
62011042060
62011042050

Preparations

- Remove the trim (1).

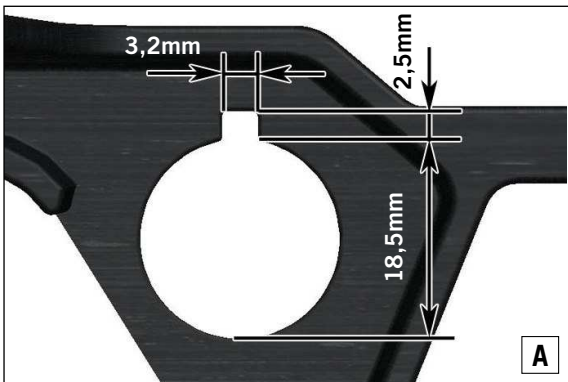


990 SMT

- Drill a $\varnothing 18.5\text{mm}$ hole for the power socket.

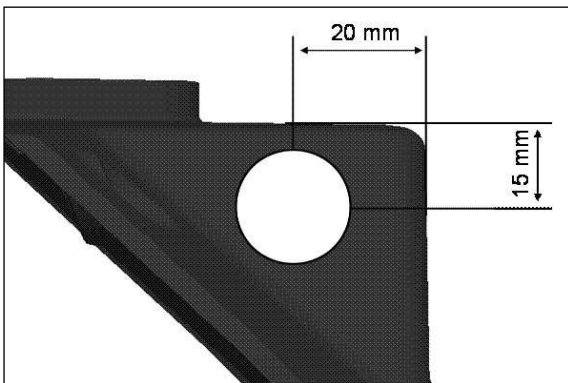
NOTE

A marking (2) on the back of the trim indicates the correct position.



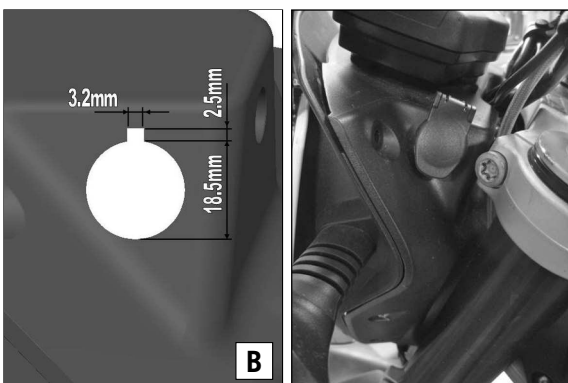
990 SMT

- Cut out a small notch in addition to the hole (figure A).



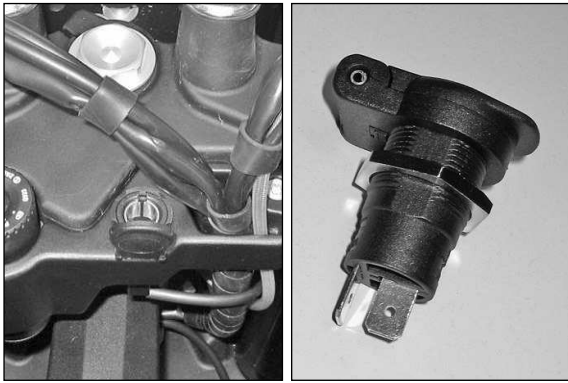
690 Duke

- Drill a $\varnothing 18.5\text{mm}$ hole for the power socket.

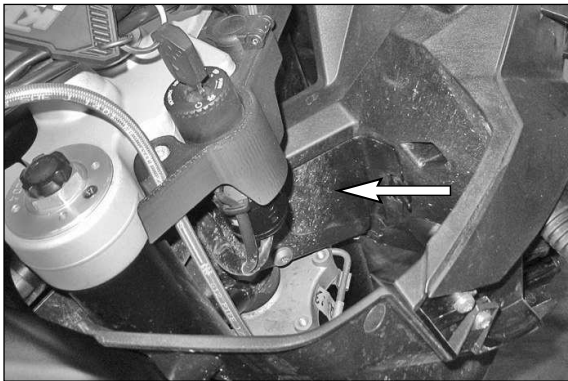


690 Duke

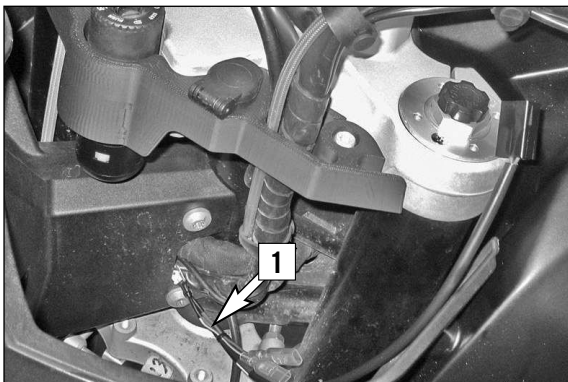
- Cut out a small notch in addition to the hole (figure B).



- Mount the power socket.
- Mount the trim (1).



- Open the panel on the right side of the motorcycle.



- Route the cable (1).

NOTE:
Route the cable from the left to the right with the wiring harness.



- Connect with ACC1 or ACC2 (figure A).

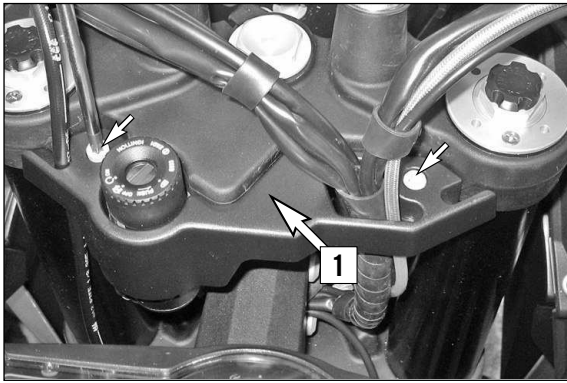
NOTE:
ACC1 - Current via permanent positive.
ACC2 - Current via ignition.

- Connect with power socket.



- Close the panel.

NOTE:
If possible, thread the cable into the spiral hose.



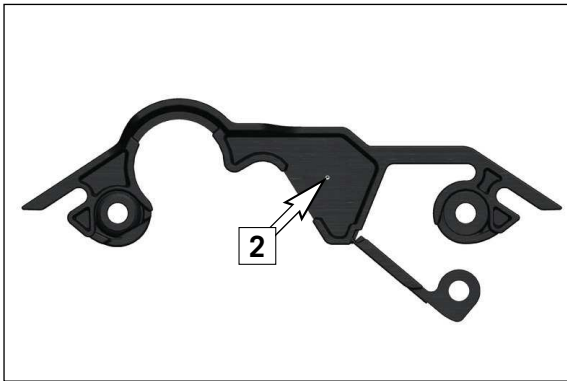
Volume della fornitura:

- N. 1. presa
- N. 1 cavo per presa SMT
- N. 1 dado esagonale M18x1 SW22

- 60111042000
- 62011042060
- 62011042050

Operazioni preliminari

- Smontare il rivestimento (1).

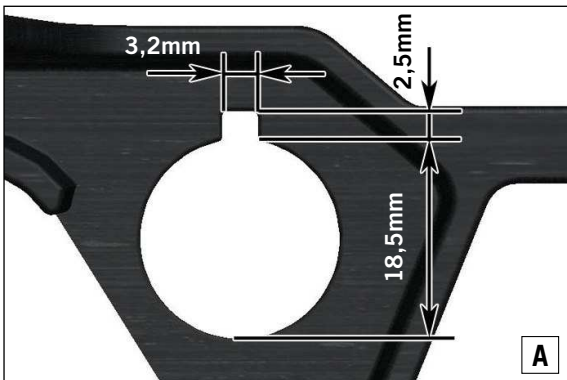


990 SMT

- Effettuare un foro di 18,5 mm di \varnothing per la presa.

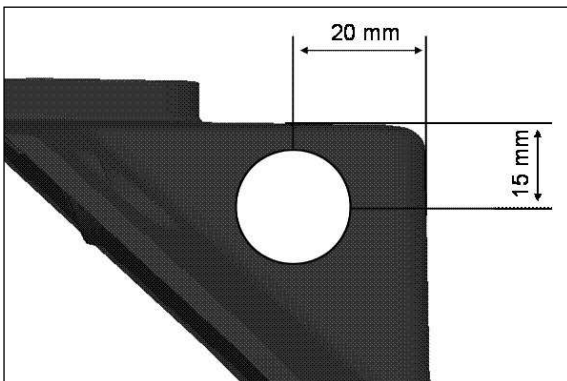
NOTA BENE

Ai fini del corretto posizionamento, sul retro del rivestimento è presente un'apposita marcatura (2).



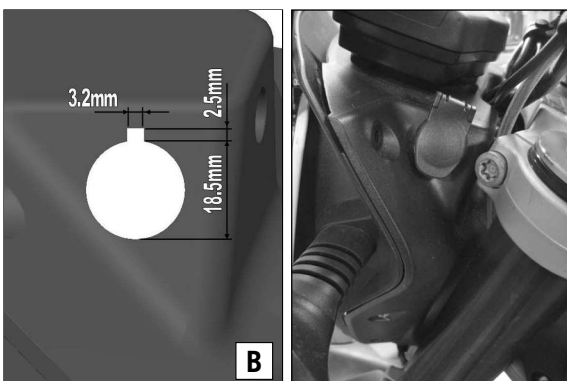
990 SMT

- In aggiunta al foro, praticare una piccola scanalatura (figura A).



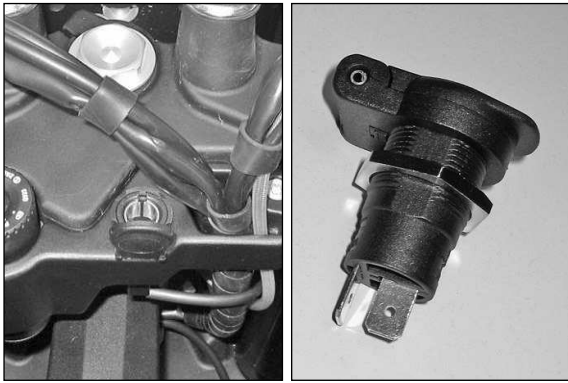
690 Duke

- Effettuare un foro di 18,5 mm di \varnothing per la presa.

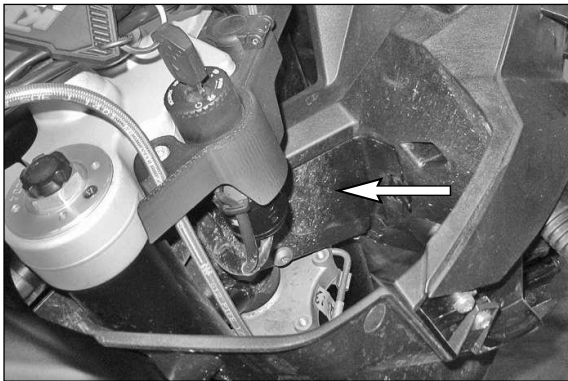


690 Duke

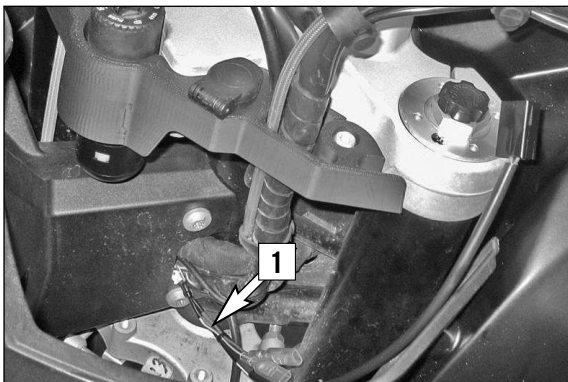
- In aggiunta al foro, praticare una piccola scanalatura (figura B).



- Montare la presa.
- Montare il rivestimento (1).



- Aprire lo sportellino sul lato destro della motocicletta.



- Sistemare il cavo (1).

NOTA BENE:
Sistemare il cavo da sinistra verso destra con il fascio di cavi.



- Effettuare il collegamento con ACC1 o ACC2 (figura A).

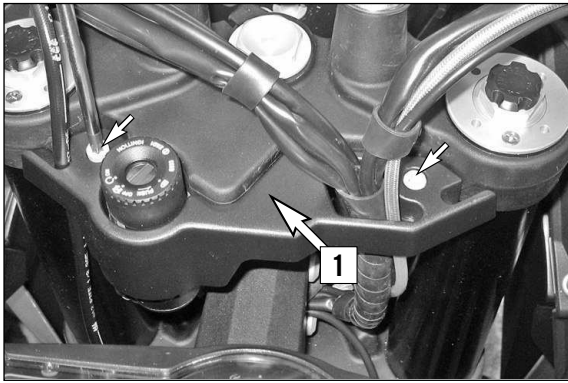
NOTA BENE:
ACC1 - corrente attraverso il positivo
ACC2 - corrente attraverso l'accensione.

- Collegare la presa.



- Chiudere lo sportello

NOTA BENE:
Collegare eventualmente il cavo con il flessibile a spirale.



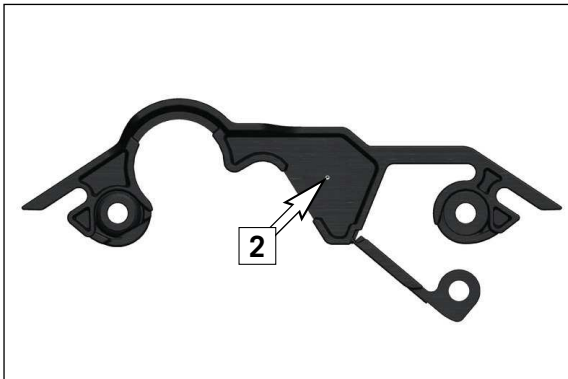
Contenu de la livraison :

- 1x Prise
- 1x Câble prise SMT
- 1x Écrou M18x1 SW22

- 60111042000
- 62011042060
- 62011042050

Travaux préalables

- Déposer le carénage (1) .

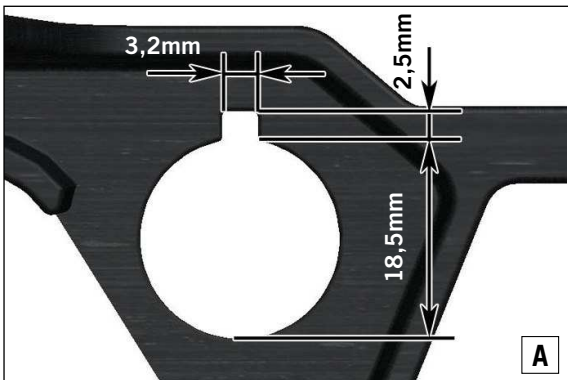


990 SMT

- Percer l'alésage $\varnothing 18,5\text{mm}$ pour le logement de la prise.

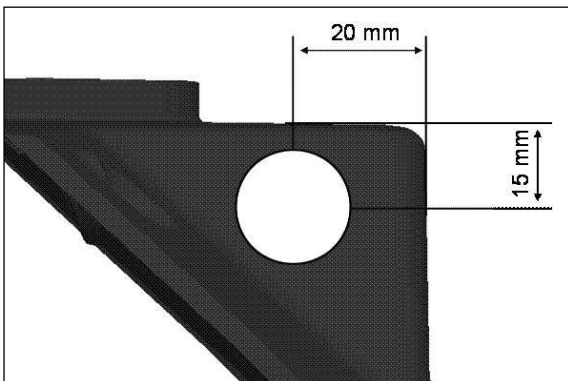
REMARQUE

Un repère (2) est marqué au dos du carénage pour percer le trou en bonne position



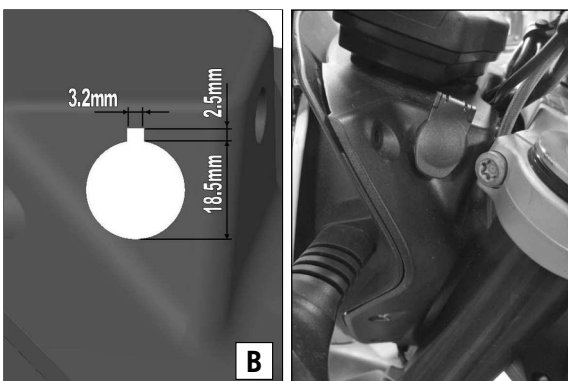
990 SMT

- En plus de l'alésage, découper une petite encoche (figure A).



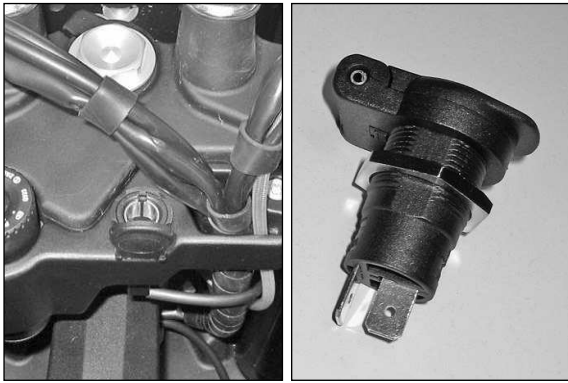
690 Duke

- Percer l'alésage $\varnothing 18,5\text{mm}$ pour le logement de la prise.

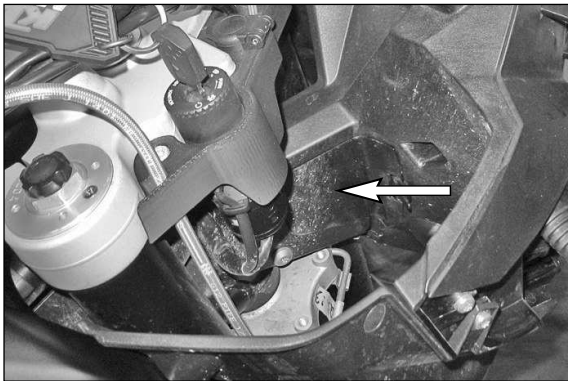


690 Duke

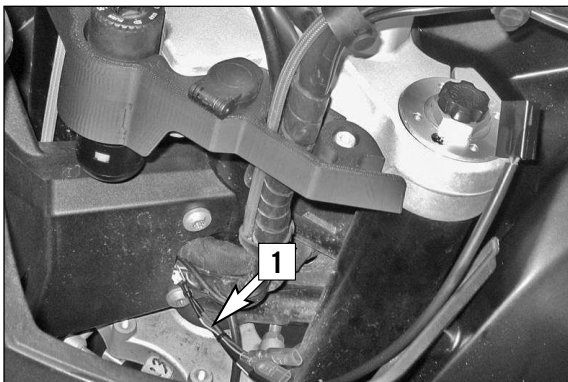
- En plus de l'alésage, découper une petite encoche (figure B).



- Monter la prise.
- Monter le carénage (1).

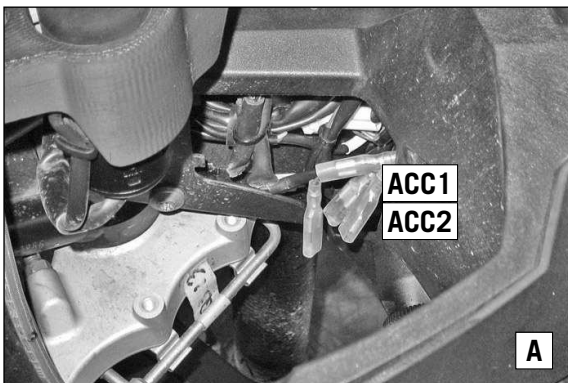


- Ouvrir le volet sur la droite de la moto.



- Mettre en place le câble (1).

REMARQUE :
Déplacer le câble avec le faisceau de câbles de la gauche vers la droite.



- Connecter avec ACC1 ou ACC2 (figure A).

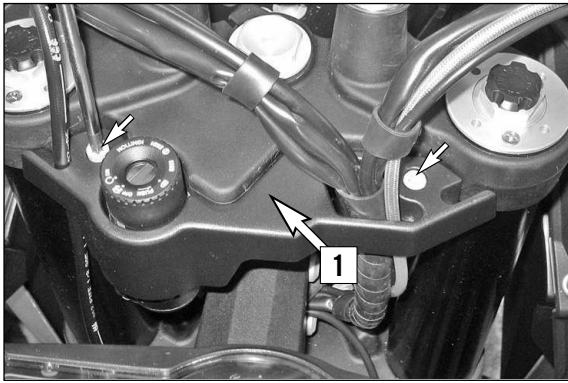
REMARQUE :
ACC1 - courant sur Plus permanent.
ACC2 - courant sur allumage.

- Connecter à la prise.



- Fermer le volet.

REMARQUE :
Relier éventuel. le câble avec le flexible spiralé.



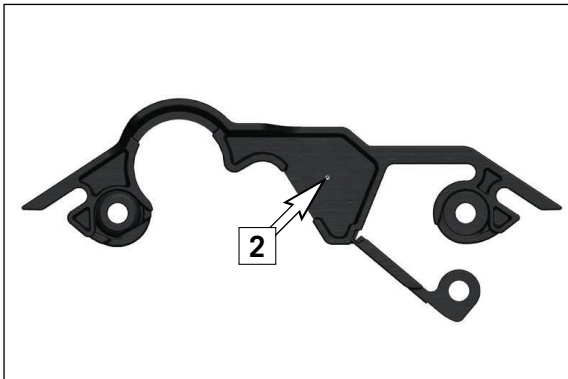
Volumen de suministro:

- 1x toma de corriente
- 1x cable para toma de corriente SMT
- 1x tuerca hexagonal M18x1 SW22

- 60111042000
- 62011042060
- 62011042050

Trabajos previos

- Desmontar el carenado (1).

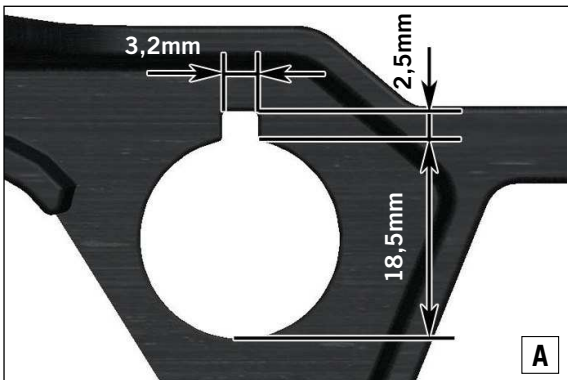


990 SMT

- Perforar un orificio de $\varnothing 18,5\text{mm}$ para la toma de corriente.

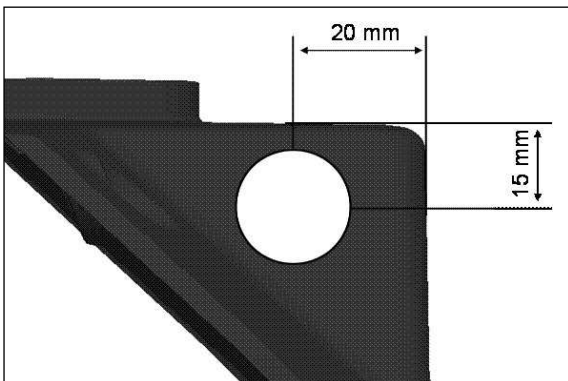
ADVERTENCIA

En la parte posterior del carenado hay una marca (2) que indica la posición correcta



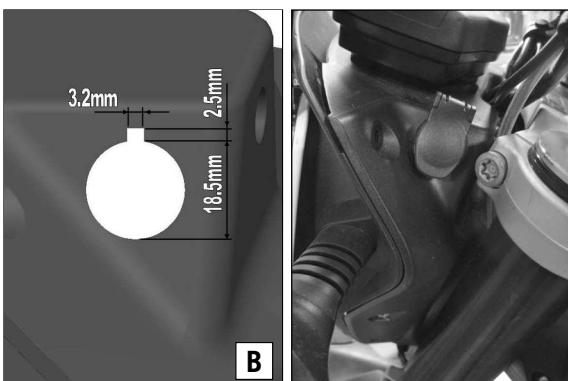
990 SMT

- Además del orificio, trazar una pequeña hendidura (figura A).



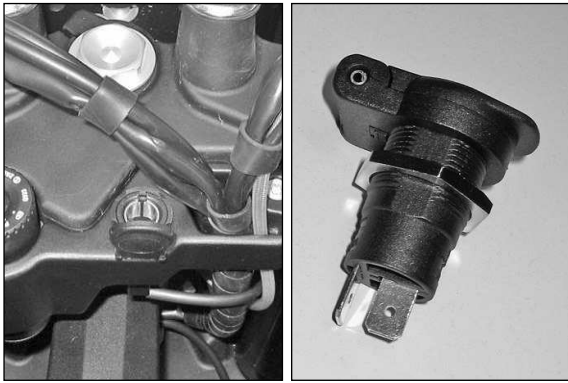
690 Duke

- Perforar un orificio de $\varnothing 18,5\text{mm}$ para la toma de corriente.

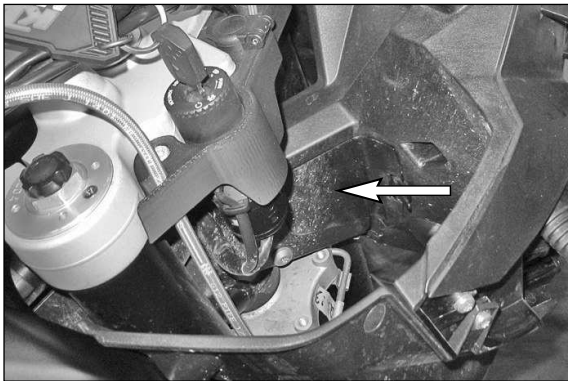


690 Duke

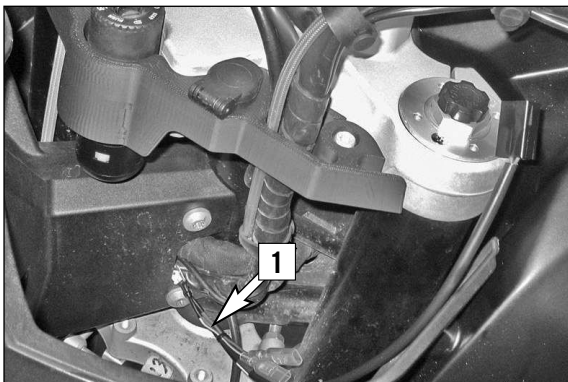
- Además del orificio, trazar una pequeña hendidura (figura B).



- Montar la toma de corriente.
- Montar el carenado (1).



- Abrir la tapa del lado derecho de la motocicleta.



- Colocar el cable (1).

ADVERTENCIA:
Colocar el cable con el ramal de cables de izquierda a derecha.



- Conectar con ACC1 ó ACC2 (figura A).

ADVERTENCIA:
ACC1 - corriente a través de positivo continuo.
ACC2 - corriente a través del encendido.

- Conectar con la toma de corriente.



- Cerrar la tapa.

ADVERTENCIA:
Si procede, unir el cable con la manguera espiral.